

TAHLEE 190

Bowman Alt Facade

HUNTER
HOMES



\$837,321*

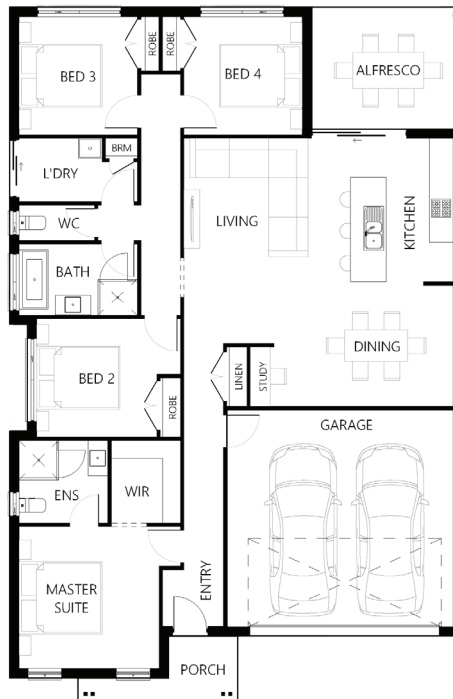
Lot 232 Cairo Close, CHISHOLM NSW

Land 510m²



Inclusions

- MOVE IN READY!
- Standard Site Costs & Basix
- 2590mm High Ceilings
- Carpet & Tiles Throughout
- Tiles to Patio & Alfresco
- 12.5KW Fujitsu A/C System
- 2.9KW Solar System
- Colorbond Roof
- 3 Coat Paint System
- Haier French Door Fridge
- Fisher & Paykel Freestanding Oven, Fridge, Microwave
- 20mm Stone Benchtops
- Soft Close Doors and Drawers
- ACC to Exterior Walls
- 35 LED Downlights



CHISHOLM
McFarlanes
Rise

Total sqs. 20.51

Total m² 190.57

Width (m) 11.49

Length (m) 17.62

Terms and Conditions: Images shown on this brochure are approximate and for illustration purposes only, these plans may not be drawn to scale. Façades and other images on this brochure may be shown as optional upgrades or not included, additional fixtures and finishes that are featured on this document may not be included in the base cost such as landscaping, tiling, decking, furniture, feature lighting, pools, driveways etc. Land estate pricing is subject to the developer's guidelines. Hunter Homes reserves the right to change plans and inclusions at any time. This package is subject to Contour, Soil, Bushfire Reports and Council Approval. All designs that are developed remain the property of Hunter Homes Pty Ltd under copyright law & we retain & claim all rights to these plans. Changing plans by 50% or more does not avoid legal responsibility for a copyright breach.

Hunter Homes Pty Ltd.

1300 BUY HOME | hunterhomesnsw.com

11 Hank Street, Heatherbrae NSW 2324

ABN 76 133 887 064 | Builder Licence 216162C

**BUILDING
LEGACY.**