







House & Land

Evolve 154N - Shoreline Facade

\$758,049*

Home Size: 154.05m² | Lot Size: 544m² | 17m x 32m Lot

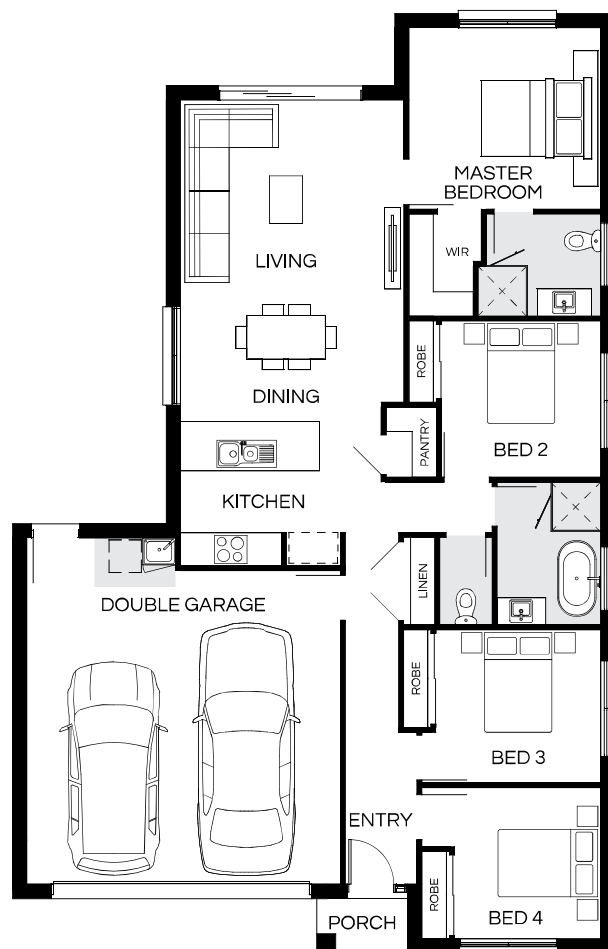
 4
  1
  2
  2

Facade image may depict features such as landscaping, furniture, driveway, window treatments and lighting which are not included in the package price or which are not available from Coral Homes.

Lot 206 Tanta Street, Chisholm | McFarlanes Rise Estate

House & Land Package Inclusions

- ✓ Designer Solutions (Option 1) price reduction included in this price*
- ✓ Fixed price site costs
- ✓ Caesarstone benchtops to kitchen, bathroom and ensuite
- ✓ Wall hung bathroom vanities
- ✓ Wall mounted tapware
- ✓ Mirror sliding doors to robes
- ✓ Stained timber feature front entry door
- ✓ Steel frame and Steel Roof
- ✓ Carpet and Tiling
- ✓ 2615mm high ceilings
- ✓ Side access to home
- ✓ BASIX Allowance
- ✓ Council application fees



Daniel Hobson

New Home Consultant

☎ 0436 654 074

✉ d.hobson@coralhomes.com.au

**CORAL
HOMES**

*Pricing shown is inclusive of Designer Inclusions offer "Designer Solutions" when selecting Option 1 (Price Reduction). Please refer to full terms and conditions <https://coralhomes.com.au/terms-conditions/>. Floorplan is indicative only, conceptual in nature and subject to change. Floorplan may depict fixtures, fittings, features, finishes, inclusions, furnishings, vehicles and/or other products which are not included in the house design, not included in the package price and/or not available from Coral Homes. *Price shown is based on Coral homes Newcastle / Central Coast region price list dated 03-02-2025. Land price at the time of printing is Land price at the time of printing is \$460,000. Price shown does not include stamp duty, registration fees, additional amounts payable in respect of variations to the house design requested by the buyer or any other incidental fees associated with the acquisition of the land and home. Plan is subject to approval by the Principal Developer and Local Authorities. Additional costs may apply for bushfire, acoustics, N3, easements or additional covenant requirements and retaining walls. Coral Homes reserves the right to withdraw this package at any time, prior to entry into a contract, without notice. QBCC 50792/1014053, OFT NSW 62084C, BLD260339.